

BALIKESİR

Agriculture and Animal Husbandry Investment Guide







With its developing economy, Turkey is becoming one of the major centers of world economy. Global enterprises prioritize Turkey in their investment decisions and gain advantages thanks to elements such as Turkey's geographical location, natural resources, and trained labor force.

Trained labor force; land-sea-air transport with multiple alternatives; proximity to metropolises and many such advantages underline Balıkesir in hosting sustainable investments. This work aims to promote current investment environment in order to enable Balıkesir to take a bigger role in Turkey, which is becoming a center of attraction with new investments.

This guide focuses on Agriculture and Animal Husbandry sectors in detail, and lists the advantages for investors in Balıkesir in aforementioned sectors. A series of advantages are given in detail and analyzable fashion, from potential opportunities of Balıkesir in aforementioned sectors to logistic opportunities, from regional incentives by Ministry of Economy to local contributions the South Marmara Development Agency will provide.

Apart from this Investment Guide for Agriculture and Animal Husbandry, other provincial investment guides also are prepared for Industry, Tourism, Energy and Mining sectors and presented to the service of potential investors. In addition to these, South Marmara Development Agency also provides support services with its technical infrastructure and its expert staff, and supports all investments in Balıkesir as a solution partner.

While we hope that this Guide proves useful to you; we would like to inform you that you can always benefit from the extensive support services our Investment Support Office gladly provides in order to help you realize your investments.



Balikesir, Center of Agriculture and Husbandry

Balikesir shows an understanding that accelerates the renewal and transformation of the region by matching its potential resources with investors. Strong agriculture and husbandry resources influential in this understanding serve directly to the goal of development. Wide and fertile agricultural lands and favorable climate in the province increase agricultural product variety. Wide meadows of the province suitable for husbandry have influenced the development of bovine and ovine breeding. Furthermore, Balikesir holds a potential for development for new investment branches in agriculture sector with its spreading organic farming and good agriculture practices. Thanks to its climate, irrigation opportunities and long harvest season Balikesir also has advantages for seed growing.

Thanks to its geographical location, Balikesir is an attractive option for any investment due to its proximity to big consumption centers; while the province has an attractive investment environment for feedstuff and poultry raising in particular.

Having coasts both on Marmara and Aegean Seas, the province has a rich marine flora and fauna. Consequently, the province has facilities processing marine products with modern methods.

Commonly found geothermal resources bring different production styles in agricultural practices that is contributing to the increase in profitability and added values in the sector.

Presence of developing beekeeping activities and medicinal aromatic plants, thanks to the rich natural environment of Balikesir, gives a new breath to the sector.

Industrial structure based on agriculture developing with this strong profile makes Balikesir a brand city in the sector.





Agricultural Product Range of Balıkesir

Balıkesir is an agricultural province with its geographical structure and climate conditions. With its fertile agricultural lands, Balıkesir has the strategic location for easily marketing agricultural products. Inspection of the distribution of investments reveals that the dominant sector is agriculture and husbandry with a share of 64%.

Sectoral Distribution Balıkesir



64%

AGRICULTURE

29%

SERVICES

7%

INDUSTRY

1,100 TONS
OF ORGANIC
PRODUCTS

15,000,000
FRUIT TREES

ANNUALLY
150,000 TONS
OF OLIVE

ANNUALLY
156,000 TONS
OF FRUIT

4,750 TONS
OF MARINE
PRODUCTS

90
DIFFERENT
SEEDS

500,000
BOVINES

1,000,000
OVINES

32,000,000
POULTRY

167,000
BEE HIVES

ANNUALLY
830,000 TONS
OF VEGETABLES

Agricultural Product Range of Balıkesir



Marmara Island





Leader Province in Agricultural Production

Balikesir has a very favorable climate and soil for the cultivation of various fruits and vegetables.

The agricultural lands of the province consist of approximately 300,000 hectares of farm lands and 82,000 hectares of olive farms. A total of 7 dams and 22 ponds serve for irrigation for agricultural activities and 7 more ponds will be operational in near future.



282,000 hectares
of Irrigable Land

22
Ponds

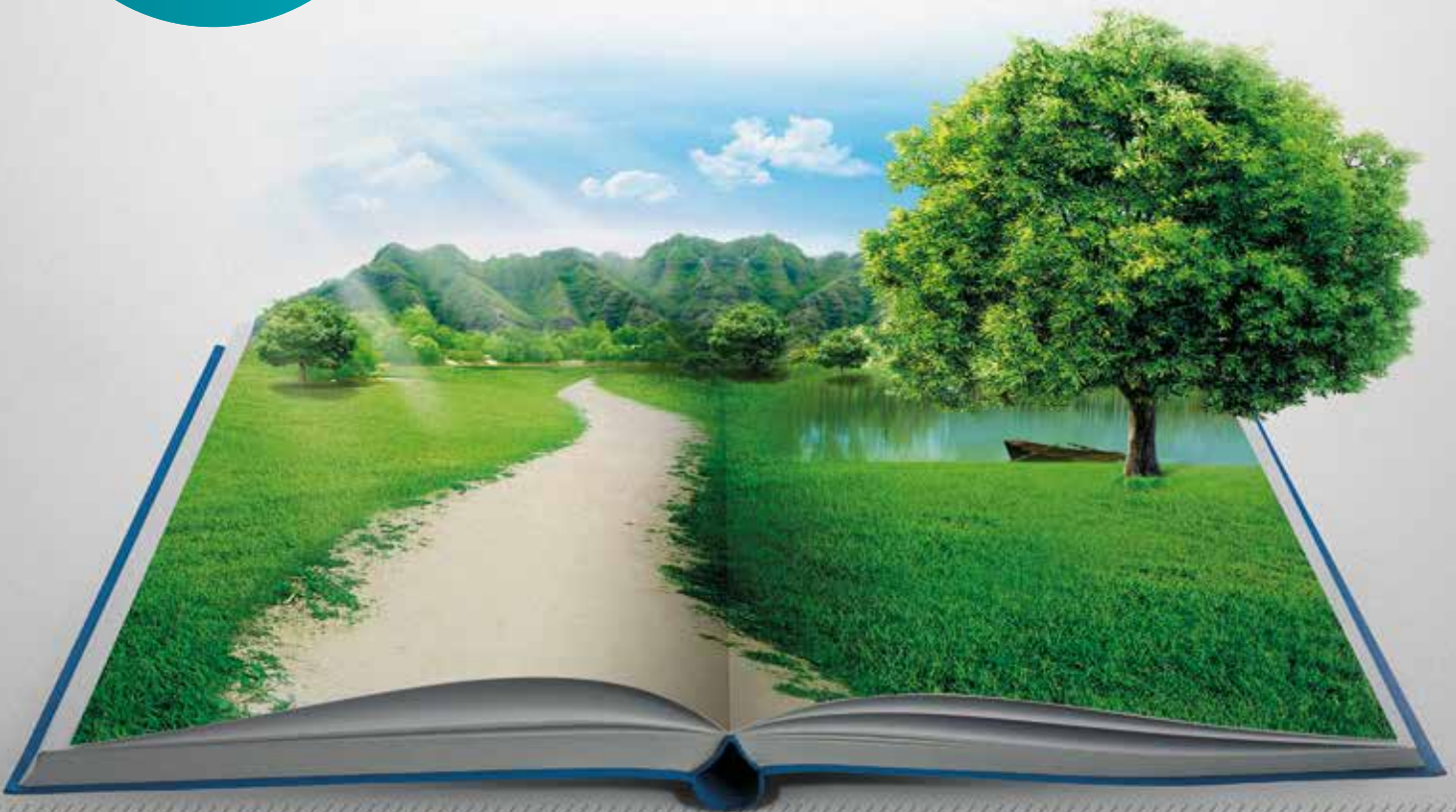
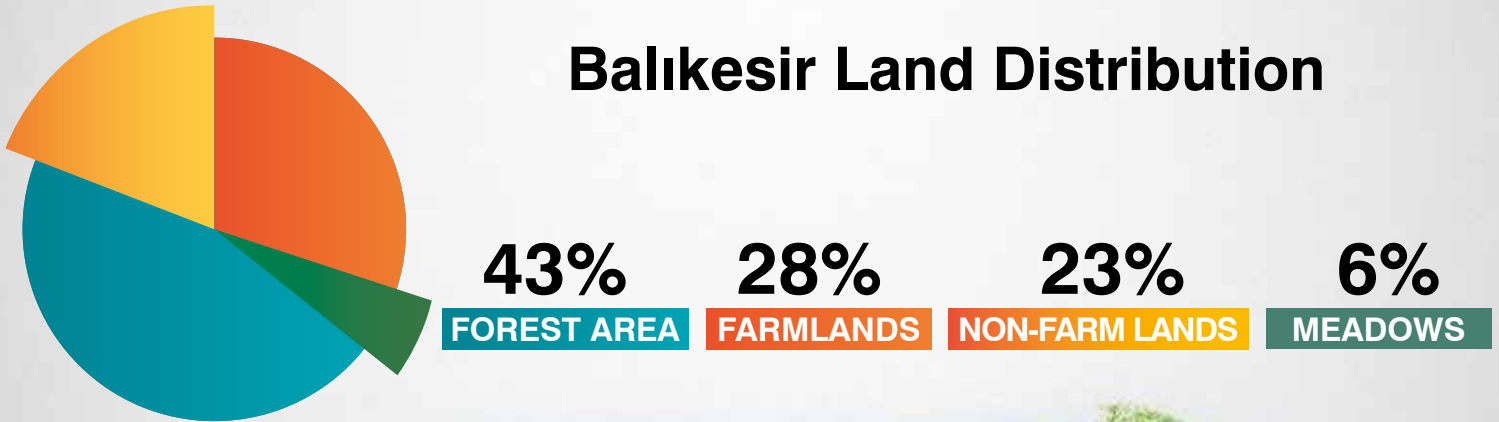
7
Dams

Examination of Balıkesir Lands



1,445,000 hectares of total lands in Balıkesir are broken down into 625,000 hectares of forestry, 413,000 hectares of farmlands, 325,000 non-farm lands and 82,000 hectares of meadows.

Balıkesir Land Distribution





Leader in Vegetable Production

Balikesir is the leader in wheat
(Green) production



Broad Bean
Oat



Paddy
Pea (Green)
Barley (Green)
Corn (Forage and whole)



Rye
Fodder Turnip
Beet for fodder
Rapeseed (Canola)
Sorghum
Triticale

Balıkesir Meets the Fruit-Vegetable Demand of Metropolises



Environment suitable for Fruit and Vegetable Production

A wide variety of fruit and vegetable production take place in Balıkesir. Grown products directly meet the demands of the metropolises. Total fruit production of Balıkesir amounts to 230,000 tons. The largest share of this production belongs to olives and other nuts with 160,000 tons. Fruits widely grown in the province are grapes, peaches, tangerines and cherries. Vegetable production amounted to 830,000 tons with tomatoes taking the lead with 420,000 tons.

420,000 tons
Tomatoes (Table, Paste)

62,000 tons
Pepper (Paste, Capia, Bell, Long Green)

26,000 tons
Eggplant



Parsley
Asparagus



Red Beet
Dill
Okra



Tomato (Paste)
Cucumber (For Pickle)

Pepper (Sweet Green)



Homeland of Olive, Balıkesir

Especially Ayvalık, Gömeç, Burhaniye, Edremit, Havran, Erdek and Bandırma are the most important olive and olive oil production centers of Turkey.

“Edincik Su” in Bandırma Bay and Erdek region and Edremit oil olives are grown in Bay Area. In 2007 “Ayvalık Olive Oil” geographical indication has been registered in line with high quality olive industry production goals.

The province hosts olive and olive oil harvest festivals in olive harvest season each year.



Balıkesir for Natural and Healthy Nutrition



1,100 Tons of Organic Production on 27,000 Decares of Land

Organic agriculture is an important agricultural activity for protection of natural resources and ensuring sustainability of agricultural activities. 1,100 tons of production are carried out in organic agriculture which has become more important nowadays. Organic agriculture is spread over 27,000 decares and grows each day with continued investments. Main products of the organic agriculture in the province are; hashish, wheat, oat, melon, tomato, olive, pistachio, cherry, walnut, bean, apple, strawberry and thyme.

Good agriculture practices are common in Burhaniye, Bandırma, Gönen, Gömeç counties, on over 85,000 decares of land. Products obtained from good agricultural practices are mainly, rye, barley, almond, kidney bean, shell bean, tomato, cucumber, olive, apple, cherry, melon, watermelon, pear, walnut, mandarin, fig and grapes. There are 24 coops which use good agricultural practices.





High Quality Seed Production in Balıkesir

Climate, irrigation opportunities and long harvest season in Balıkesir create advantages for growing seeds. Over 90 different standard vegetable seeds, mainly tomato, pepper, eggplant, roquette, dill, parsley, melon and onion are grown in the province. Seed growing production are mainly focused in Ayvalık, Karesi, Susurluk, Gönen, Manyas and Bandırma counties.

Bandırma

Ayvalık

Karesi

Susurluk

Manyas

Gönen

Medicinal Aromatic Plant Production



Medicinal aromatic plants are used to add aroma to food, to increase shelf life and in medicine and pharmacy for their healing properties. With the increased interest in herbal medicine, organic and natural food, especially in the developed countries, have brought growing and processing medicinal and aromatic plants without losing their properties under spotlight.

Defoliation facilities to be built for improvement of marketing opportunities by extending shelf life of the products of the province which increase medicinal aromatic plant production capacity each passing day strike out as a significant investment opportunity.

Edremit, Havran, İvrindi, Dursunbey, Bigadiç and Sındırgı counties along with Marmara Island are prominent locations in aromatic plant production.

Edremit

Havran

Marmara

İvrindi

Bigadiç

Sındırgı

Dursunbey



Developing Forestry Activities

Balıkesir is developed also in forestry activities along with agriculture and husbandry. The province has forests spread over 625,000 hectares and ranks 5th in Turkey in terms of forest area. The forests have larch, Turkish pine, beech, alder, oak, willow, tamarisk and plane trees.

In forestry activities Dursunbey, Balya, Sındırgı, Savaştepe and Burhaniye counties come into prominence. There are also furniture and lumber factories operating in the province connected to forestry activities. Balıkesir ranks 3rd in fuel wood and 5th in pulpwood industries.

Tamarisk • Plane Tree • Hornbeam • Calabrian Pine • Beech • Larch • Oak • Willow



Rising Star in Ornamental Plant Cultivation



Balikesir is diversifying its activities in agricultural production with ornamental plants. Being among the dynamic provinces in flower bulb cultivation, Balikesir has taken the 2nd rank in flower bulb production in Turkey.

Indoor Ornamental Plants

14,000 m² 400,000 pcs

Flower Bulbs

300,000 m² 5,300,000 pcs

Outdoor Ornamental Plants

190,000 m² 870,000 pcs

Ornamental plant cultivation in Balikesir is dense in especially in Burhaniye, Karesi and Kepsut counties and usually is grown as summer and winter flowers. Burhaniye has wide cultivation of heartsease, ornamental cabbage, chinese pink, rosea, ivy geranium.



Balikesir is **2nd** in Flower bulb cultivation in Turkey



Greenhouse Cultivation in Balıkesir

Balıkesir focuses on lettuce, cucumber and tomato production in greenhouse cultivation. In the province, high tunnels and plastic greenhouses are common in greenhouse cultivation.

Greenhouse cultivation is widespread in Altieylül, Karesi, Susurluk, Burhaniye and Sındırgı counties.



Favorable Environment for Geothermal Greenhouse Cultivation



Hot springs of Balıkesir have suitable temperature and flow for greenhouse cultivation, directing sector investments to this area.

Rich geothermal sources of the province lower heating costs which makes investment environment more attractive.





Animal Feed Production Increases in Wide and Fertile Lands

Balikesir is among the leading provinces in animal products. Being rich in animal feed, which is a significant cost element for husbandry sector, Balikesir produces over 1,750,000 tons of animal feed each year.



Animal Feed Production Increases in Wide and Fertile Lands



Balikesir has enterprises which lower input costs by both performing their own livestock activities and producing animal feed. Forage corn, vetch (green grass), clover (green grass) and oat (green) are among the major animal feeds used in the region. Altieylül, Karesi, Susurluk and Manyas are major animal feed production centers.

Farmers in Balikesir are able to obtain their animal feed needs with low logistic costs and reasonable lead times thanks to animal feed factories in the province.





Leader in Husbandry Investments



3rd in Bovine Milk
Production



3rd in Egg Poultry



3rd in Broiler



3rd in Red Meat
Production



4th in Number
of Bovine



4th in Number of
Merino Sheep



Bovine Breeding in Balıkesir



Balıkesir has 3.4% of bovine breeding in Turkey. The province has approximately 500,000 bovines and majority of these are beef cattle.

Wide meadows of the province were instrumental in spread of bovine breeding. Most of the bovines in Balıkesir are cultivated breeds.

Dairy breeding is more prominent in Altıeylül, Karesi, Bigadiç, Susurluk, Gönen and İvrindi counties while meat breeding is prominent in Susurluk, Bigadiç, Altıeylül and Karesi counties.

Breeding enterprises also produce coarse fodder due to rising animal feed prices.

Balıkesir Milk Production





Ovine Breeding in Balıkesir

Balıkesir also boasts ovine breeding activities. In terms of the number of ovine animals province has 2.2% of all sheep and goats in Turkey. Balıkesir has 177,000 sheep (merino), 604,000 sheep (domestic), 196,000 goats (hair). With this figures the province has approximately a million ovine animals.

The “Balıkesir Curly”, which is famous for its qualified meat’s delicious taste, is very popular. Ovine breeding is prominent in Karesi, Altıeylül, Sındırgı, İvrindi and Dursunbey counties.

Sındırgı

Dursunbey

Altıeylül

İvrindi

The number of Small Ruminants in Balıkesir



Poultry Farming in Balıkesir

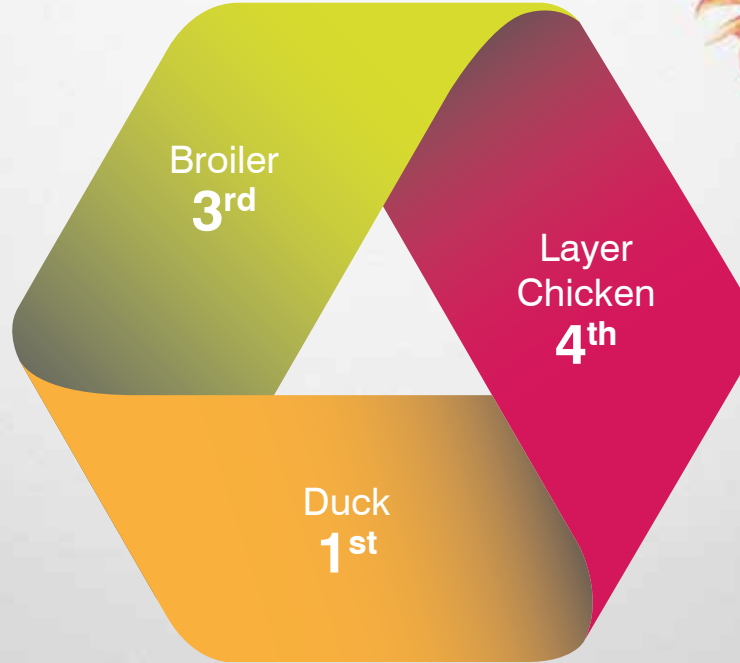


Poultry farming is an important activity in Balıkesir. Approximately 12% of the broilers produced in Turkey are produced in the province. Balıkesir has the 3rd highest number of broilers in the country. Leading white meat producers in Turkey prefer Balıkesir in their investments. Proximity of Balıkesir to large consumption centers is the deciding factor in development of poultry activities in Balıkesir.

Approximately 7% of layer chickens are in the Region. Balıkesir has the 4th highest number of layer chickens in Turkey.

Poultry farming is widely performed in Bandırma, Altıeylül, Karesi, Manyas Erdek, Bigadiç and Susurluk counties.

Bandırma
Altıeylül
Manyas
Erdek
Bigadiç
Susurluk
Karesi





Beekeeping

Intense beekeeping activities in Balıkesir have contributed to the development of side products of beekeeping such as beeswax, pollen, propolis and royal jelly.

Beekeeping is especially prominent in Havran county. The county has the only raw bee honeycomb production facility in the whole Aegean and Marmara Regions. Beekeeping activities are also widely practiced in Edremit, İvrindi, Burhaniye and Bandırma counties.

Balıkesir has over 160,000 hives. These hives produce about 3,200 tons of honey each year. Apart from being marketed in domestic markets the honey from these hives are also exported to world capitals such as Paris, London and Amsterdam by local enterprises. With the Joint projects of Province Food, Agriculture and Husbandry Directorate and Metropolis Municipality along with support from Agriculture and Rural Development Support Institution beekeeping is developing rapidly.

Havran

167,000
HIVES

Edremit

Bandırma

Burhaniye

İvrindi

3,200 tons
HONEY

Marine Products Diversity in Balıkesir



Having coast in both Aegean and Marmara seas, Balıkesir is rich in fish diversity.

Aegean Sea has red mullet, bream, common sea bream, red coral, annular bream, annular sea bream, scorpion fish, sargo, bronze bream, bothus, white grouper, striped seabream, bass, bluefish, blue mullet, grouper, mackerel, pilchard, pink dentex, mullet, garfish, lizard fish.

Marmara Sea has red mullet, chub mackerel, annular beam, annular seabream, scorpion fish, bothus, bronze beam, bass, blue mullet, mackerel, pilchard and mullet.

In Balıkesir annually 4,750 tons of marine products are produced.

Fishing activities developed thanks to the geographical location of the province, are dense in coastal counties such as Erdek, Marmara Island and Ayvalık. Especially in Marmara Island, canning activities are pursued for any fish caught. Marmara Island also has the largest fish ice plant in Turkey.





Expanding Agricultural Export Market

Turkey is among the major olive oil exporters and a significant portion of this export comes from Balıkesir, which has over 10 million olive trees.

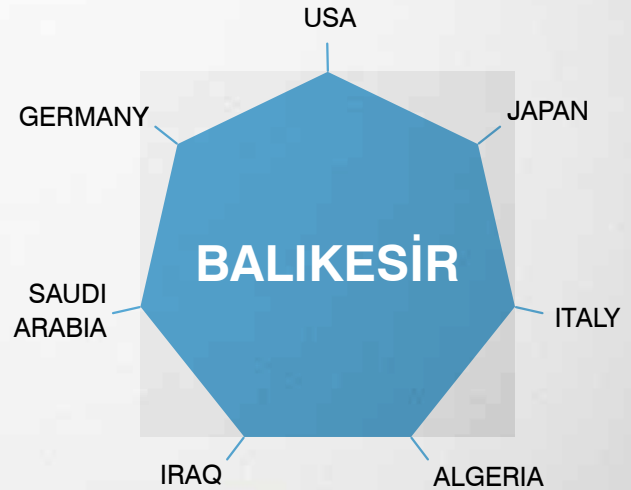
Apart from olive oil and sunflower oil facilities in the province, fruit and vegetable processing plants, flour and animal feed factory have a large share in exports. Animal products on the other hand, lead the export items of Balıkesir.

Balıkesir's Agricultural Export:
Approximately **\$ 150,000,000**

Animal Products Export
\$ 125,000,000

Fruit and Vegetable Products Export
\$ 25,000,000

Strong Export Markets of Balıkesir



Agricultural Employment Figures

Balikesir is a province prominent in agricultural production and the majority of its labor force is employed in agriculture. Agricultural population of the province is estimated to be 180,000.



Agriculture in Balikesir is Strong with its Investors

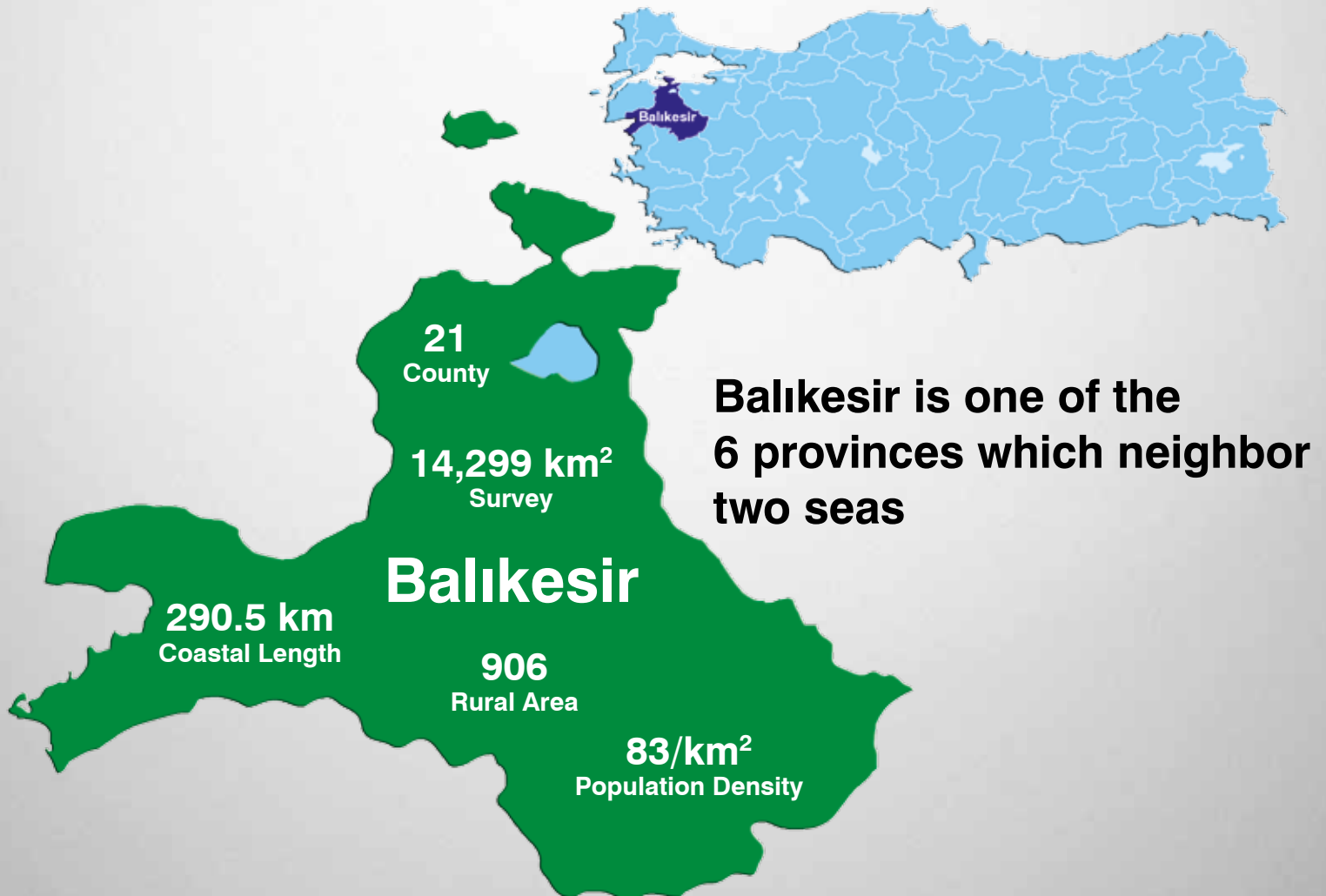
- ▶ Bovine, ovine and poultry breeding facilities
- ▶ Dairy facilities
- ▶ Slaughter house and meat processing plants
- ▶ Egg production facilities
- ▶ Giant animal fed factories where feed crops are processed
- ▶ Modern olive oil production facilities
- ▶ Oil producing facilities that process industrial oil crop plants
- ▶ Modern industrial fruit and vegetable processing plants
- ▶ Paste factories that process tomatoes of the province
- ▶ Flour factories



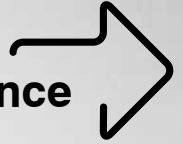
Geographic Location

Located in the south of Marmara Region, Balıkesir is renowned for its proximity to metropolises such as İstanbul, İzmir and Bursa. It is directly linked to all port cities of Turkey through Bandırma Port, which makes it the crossroads between Turkey and World markets.

Neighboring both Marmara and Aegean Seas makes Balıkesir one of the 6 provinces which neighbor two seas.



Population Dynamics of the Province



With its population of approximately 1.2 million, Balıkesir has 1.5% of the population of Turkey.

Total labor force of
451,450 Persons

Expected population in 2040
3,280,000 Persons





Education in Balıkesir

With its education infrastructure, the province has the intermediate staff and qualified labor resources required by all sectors.

Balıkesir University and Bandırma On Yedi Eylül University provide education with 15 faculties.

The province has 1,200 pre-undergraduate education institutions.

- ▶ 100% schooling rate in primary schools
- ▶ 70% schooling rate in secondary education



Education Develops with Universities which have over 40,000 students in total

More qualified generations grow in Balıkesir with education institutions providing vocational education in each county

- ✓ 2 Universities
- ✓ 15 Faculties
- ✓ 5 Graduate Schools
- ✓ 16 Vocational Graduate Schools
- ✓ 64 Departments

Health in Balıkesir

There are 30 hospitals spread all over the province, 23 of them being public hospitals, 6 private hospitals and 1 research and training hospital. 3 of these hospitals are also dental and oral health centers.

Additionally, the construction of a Province Hospital with 850 beds is continuing. It is expected to be fully operational in 2017.

In Balıkesir

- ▶ 20 Community Health Centers
- ▶ 336 Family Health Centers
- ▶ Integrated Public Hospitals in 4 counties
- ▶ 1 Community Health Laboratory

are in service.

Province
hospital with
850
beds

23
public
hospitals

3
dental and
oral health
centers

6
private
hospitals



An aerial night view of a city, likely a metropolis, with numerous glowing lights scattered across a dark blue background. The lights are concentrated in certain areas, suggesting urban centers or industrial zones. The overall scene is illuminated with a strong blue and yellow color palette.

Crossroads for Metropolises

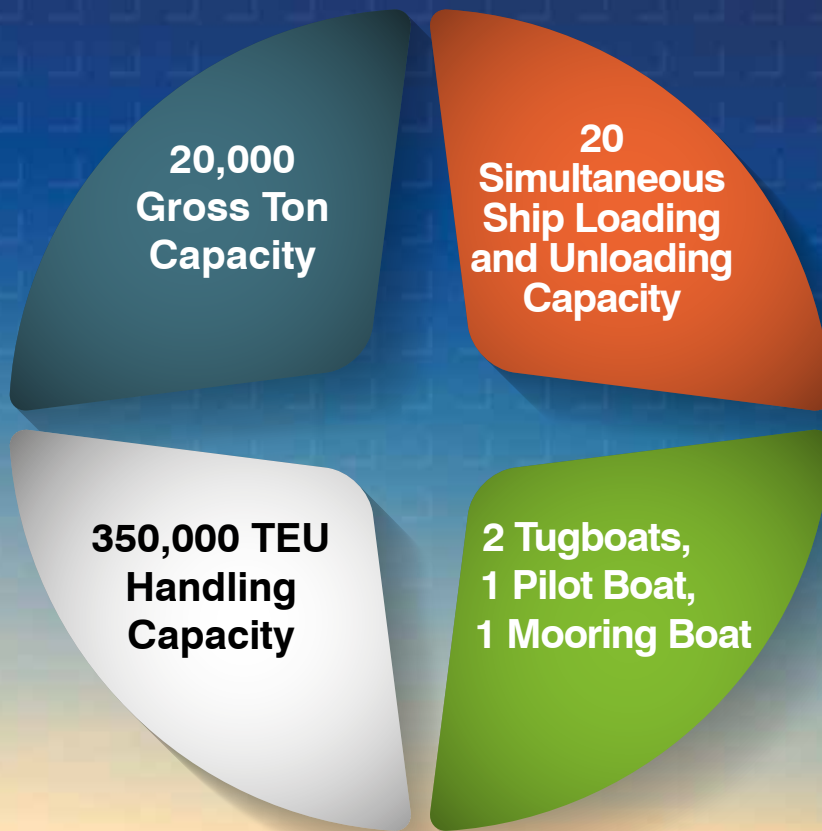
**Strong Logistic
Infrastructure Advantages**

**Total of 25 Million Population
in Neighboring Provinces...**

A Strong Port in Product Shipment: “Bandırma”

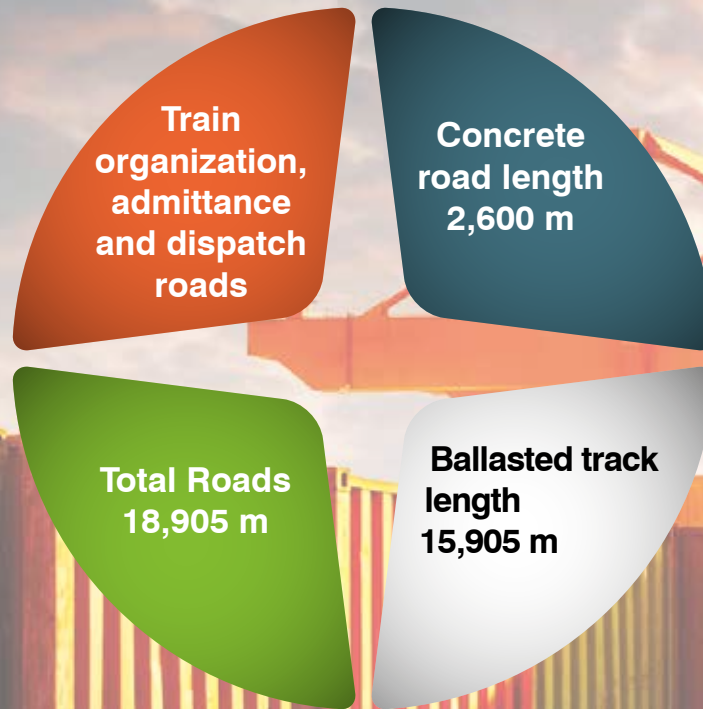
All kinds of freight can be handled at the Port of Bandırma, which is connected to all the cities of Turkey via railway lines.





TCDD Gökköy Logistics Center

- ▶ Bandırma Port 110 Km
- ▶ İzmir Port 230 Km



GÖKKÖY LOGISTICS CENTER;

- ▶ Container loading, unloading, transfer and storage areas
- ▶ Bonded and unbonded warehouses
- ▶ Customer offices, parking lot, truck parking area,
- ▶ Banks, restaurants, hotels, repair, maintenance and washing stations, fuel stations, warehouses

Logistic Infrastructure of Balıkesir Grows Each Passing Day

Grand Anatolia Logistic Organizations Project (BALO)

Loads taken from load collection centers in Middle and Western Anatolia, such as Gökköy Logistics Center, will reach load collection center in Bandırma, which is a crossroads, with block trains; then will reach Tekirdağ with train ferries and connect to the international railroad network and reach Europe through linking road newly built between Tekirdağ and Muratlı.

Block trains leaving Kapıkule border gate will reach logistics centers in Wien, Nürnberg, Stuttgart, Köln and Lyon.



Koca Seyit Airport

Built in 1997, Koca Seyit Airport enables transportation from metropolises such as Ankara and İstanbul to every location in Balıkesir.

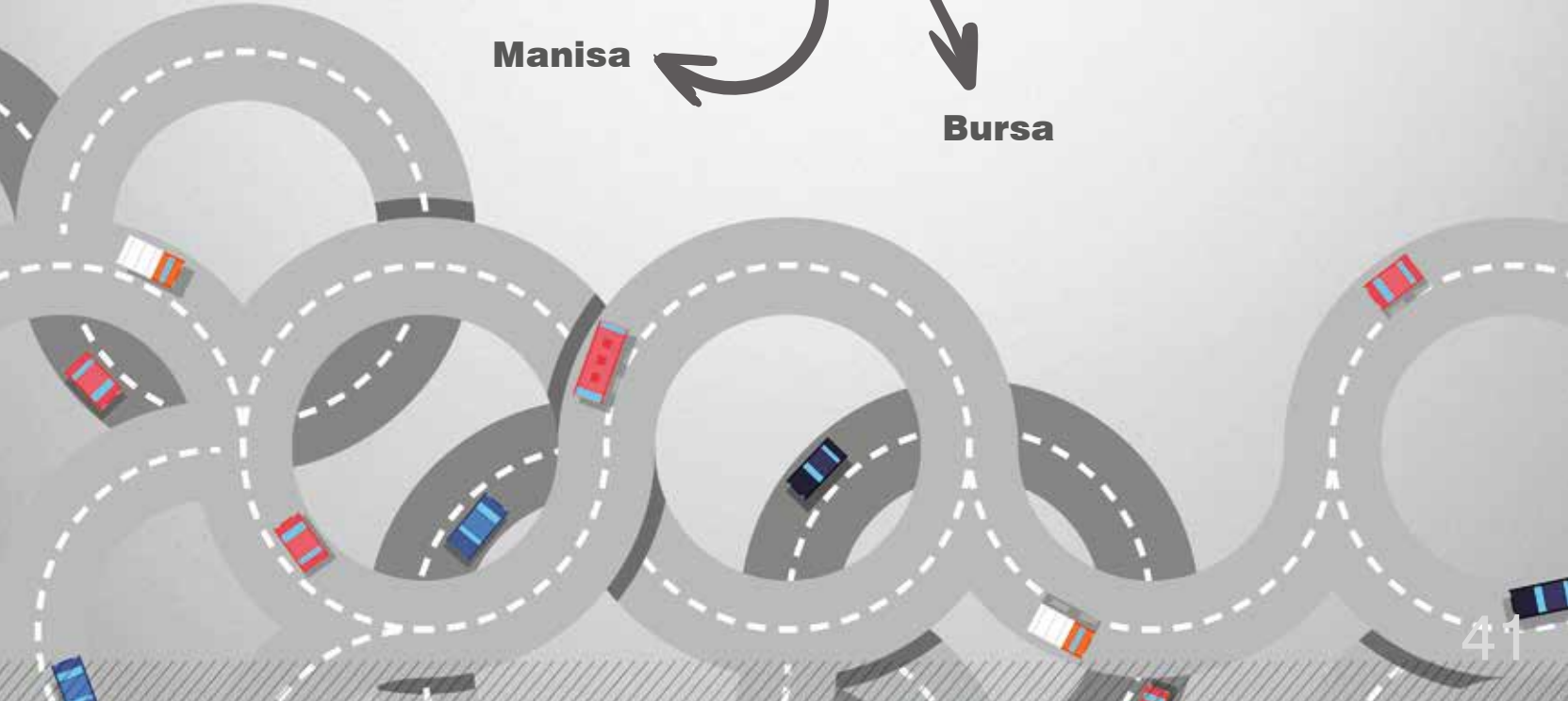
- ▶ **23,600 m² terminal**
- ▶ **2 Aprons with capacity of 6 planes**
- ▶ **Quick service with 21 Counters**
- ▶ **Over 8,000 Flights with 120 International Flights**
- ▶ **Over 300,000 Passengers in Domestic and International Flights**
- ▶ **Accessible and Green Airport Certified**



4-Hour Transportation Ring



The “4 Hour Transportation Ring”, which will make Balıkesir a Logistics center, will enable traveling around the Marmara Sea in 4 hours; integrate with new transportation projects and together with the BALO project, will facilitate Balıkesir’s open up to Europe.



Europe



Grand Transportation Projects Connected to Balıkesir



► **Gebze-Orhangazi-İzmir Highway Project - Osmangazi Bridge**

The Project that will reduce travel time between İstanbul and İzmir to 3.5 hours is 433 km long. With Balıkesir located in the center, the completion of the project will reduce İstanbul-Balıkesir to 2 hours and İzmir and Balıkesir to 1.5 hours. Opened in 2016, 2,682 meter long Osmangazi Bridge, which is a part of the Gebze-Orhangazi-İzmir Highway Project, has a central span of 1,550 meters and is the 4th bridge with largest central span around the world.

► **Tekirdağ-Çanakkale-Balıkesir Highway Project - Çanakkale Bridge**

This project will create routes alternative to Bosphorus crossing for transportation from Aegean and Inner Anatolia Regions to Thrace and Europe.

Connection of Tekirdağ-Çanakkale-Balıkesir Highway to Gebze-İzmir Highway near Balıkesir will create an additional momentum for tourism and other sectors.

► **Bandırma-Balıkesir - İzmir High Speed Train Project**

The project will act as the passenger and cargo line connecting Aegean Region to Europe through Bandırma and Tekirdağ ports. It will also connect to Ankara-İstanbul route on Bursa connection.

► **Northern Marmara Highway - Yavuz Sultan Selim Bridge**

Widest suspended bridge of the world with its 59 meters width and the longest bridge with rail transport on the world with its 1,408 meters of main span.

► **Bandırma-Bursa-Bilecik High Speed Train Line Project**

With the completion of the 215 km project, Bandırma will be connected to Bursa, which is a metropolis with a fully developed industry, through railroad.

► **Tekirdağ-Çanakkale-Bandırma Road Project**

Railroad project that will serve passenger and cargo transport between Bandırma and Çanakkale will start from Bandırma and reach Tekirdağ through Çanakkale, over Biga and Karabiga, covering Bandırma Organized Industrial Zone and Gönen Leather Organized Industrial Zone.

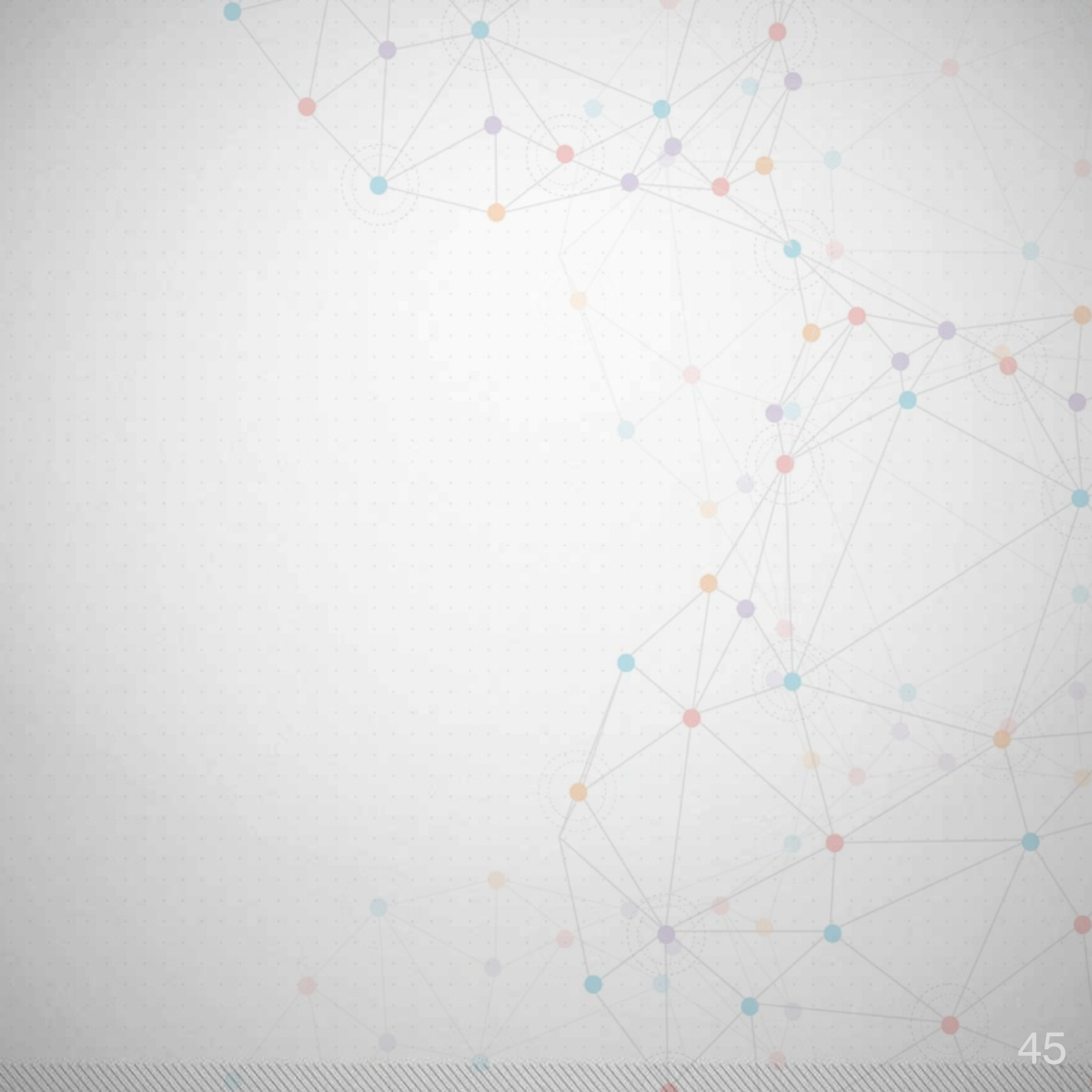
► **Bay Light Rail System Project**

With this project planned between Altınova and Küçükkuşu, a comfortable and rapid transportation will be provided at Bay Line that has a high tourism potential.

A complex network diagram with nodes of various colors (red, blue, orange, purple, cyan) connected by thin grey lines. Some nodes are highlighted with dashed circles. The background has a light grey grid pattern.

Incentives

**The most advantageous incentive region among
the provinces neighboring the Aegean or the Marmara Seas**





Agriculture and Rural Development Support Institution (TKDK)

Agriculture and Rural Development Support Institution provides support to investors to provide sustainable development in Turkey, serve priority goals and to ensure enterprises in the region can meet European Union Standards. Financial contribution is provided from the fund co-financed by the European Union and Turkish Republic. Investment support is non-repayable.

Provided Support Topics

- ▶ **Enterprises producing milk, red meat, white meat and eggs**
- ▶ **Enterprises processing and marketing milk, red meat, white meat and eggs**
- ▶ **Enterprises producing vegetable production and processing and marketing fruits and vegetables**
- ▶ **Enterprises producing, processing and marketing bee products**
- ▶ **Marine breeders and marine product producers**
- ▶ **Enterprises operating in ornamental plants – medicinal and aromatic plants**





Ministry of Economy provides support for investments in order to reduce regional development differences, increase value added investments, improve production and employment figures, and expand R&D efforts which would increase international competitive power.

REGIONAL INCENTIVE PRACTICES

► Customs Tax Exemption

Machinery and equipment to be imported for the investment which will benefit from this incentive are exempt to customs tax.

► VAT Exemption

Machinery and equipment to be purchased for the investment which will benefit from this incentive are exempt from VAT.

► Insurance Premium Employer Share Support

Insurance premium employer share accrued as a result of additional employment created within the scope of the investment is paid by the Ministry; not to exceed minimum wage at the time per employee.

► Tax Reduction

In investments subject to incentives, income and corporate tax are paid with reductions at rates stipulated separately for regions the investment is made in.

► Investment Site Allocation

In investments realized with incentive certificates, free site allocation can be made in order to hasten the investment in some cases.

► Interest Support

In investment loans with at least one year maturity to be used within the scope of regional investment incentive, interest reduction support is provided.

**Investments in
Agriculture and
Industrial Sectors based on
Agricultural Products
in Balıkesir benefit
from Region-3
Incentives**



Ministry of Food Agriculture and Livestock

► Husbandry Support

Ministry of Food, Agriculture and Livestock provides support per livestock each year to popularize animal husbandry. Support subjects are: milch and combined species and their hybrids and fatling species and their hybrids, breeder buffalo, breeder sheep-goat, feeding material production.

► Diesel Fuel, Fertilizer and Soil Analysis Support

Farmers are provided with diesel oil, fertilizer and soil analysis support each year per decare for increasing modern agriculture activities and efficiency in agriculture.

Support subjects are: Landscape and ornamental plants, special grazing, meadow and forestry assets areas, cereals, forage plants, legume family, tuber crops, fruit and vegetable areas, oilseeds and industry plants.

► Organic Agriculture and Good Agriculture Support

Support is provided to increase organic agriculture and good agricultural practices of producers.

Support subjects are fruits, vegetables, arable crops, breeder cow, buffalo, calf, breeder sheep, goat, hive with bees, greenhouse, ornamental plants, medical aromatic plants; and support is provided per animal or decare.

► Certified Seed and Sapling Use and Production Support

Apart from these support types, milk analysis, raw milk, dry milk, animal disease indemnity, disease free processing, certified business, hive bee and marine products supports are available.



Ziraat Bank provides loan support in various subjects to people occupied in agriculture and husbandry to support agricultural development.

► **Vegetative production Loans Forbes**

- Greenhouse
- Good Agricultural Practices
- Organic Agriculture
- Modern Pressure Irrigation
- Agriculture Machinery
- Harvest and Marketing
- Land Purchase
- Certified Seed, Seedling and Sapling Production
- Perennial Animal Feed Plant Production

► **Livestock Loans Forbes**

- Breeder Milch Cow
- Bovine and Ovine Dairy Animal
- Breeder Heifer and Fatling Cow Breeding
- Bovine and Ovine Fatling
- Breeder Poultry Raising
- Beekeeping
- Thoroughbred Horse Breeding

► **Marine Products Forbes**

- Marine Product Hunting
- Marine Product Breeding





South Marmara Development Agency Supports

South Marmara Development Agency (GMKA) provides grants to SMEs registered to Çanakkale and Balıkesir through “Call for Proposals” method.

Call for proposals is a support type where SMEs within a specific support program can submit project proposals within specified subjects and conditions. The support programs, which can be applied for at certain times of the year, have so far provided SMEs with support in developing agriculture based industry, processing agricultural products and producing machinery, and equipment for agriculture and food sectors. Subjects and sectors to be supported may change each year depending on the program.

The projects sorted by the scores, and are provided grants according to the program budget. Successful projects are provided 50% of their project budget in grants. Part of the grant is paid in advance to the companies to relieve financing problems. Active grant programs and current information on grant programs can be checked at www.gmka.gov.tr/destekler.



South Marmara Development Agency is by Your Side with Balıkesir Investment Support Office



South Marmara Development Agency Balıkesir Investment Support Office operates to improve investment environment of the province, attracting investment by promoting investment environment through various media and to support investors who decided to invest in the province in investment processes.

Within the scope of these activities, Investment Office;

- ▶ Informs investors in areas they need
- ▶ Conducts analyses, reports, inventory studies on business and investment environment of the province and share these studies with investors
- ▶ Supports investors in finding lands suitable for investment
- ▶ Follows permit and license processes for investments
- ▶ Organizes events promoting investment environment
- ▶ Prepares and practices strategies to improve business and investment environment of the province and improve coordination between the agencies the investor deals with undertakes studies.



Investment Support Office Services

Balıkesir Investment Support Office

Works to improve business and investment environment of the province, promote investment opportunities to investors to attract more investments and to direct and inform investors.

Balıkesir Investment Support Office serves the investors with;

Qualified staff

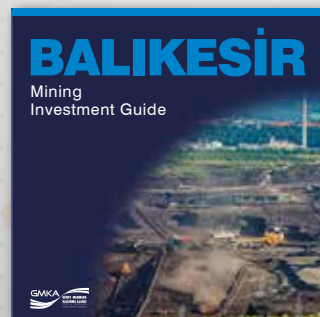
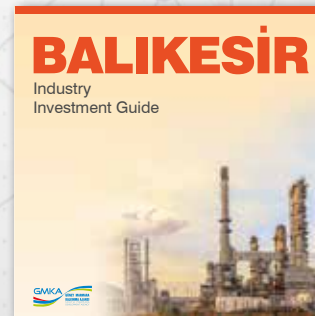
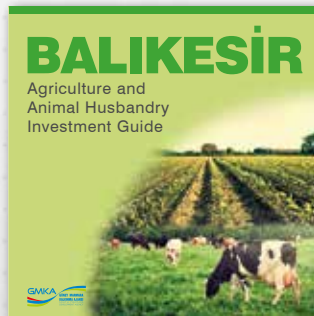
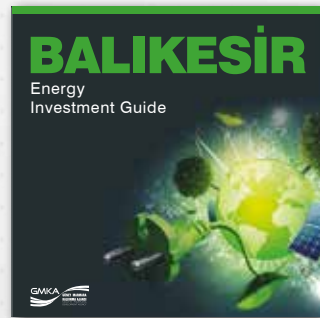
Strong institutional structure

Strong communication network between institutions

Introducing the Provincial Investment Climate



In order to promote business and investment environment of the province, and to attract investors, events such as domestic and international conferences, fairs, seminars, meetings, business trips are organized and participated in. Written or visual materials are prepared to promote investment opportunities of the province to investors.





Inventory of Land Available for Investment

Via geographical information systems established within the Agency, investors are supported in finding suitable lands for their investments. Information on lands are gathered and continuously updated online in accordance with the protocols signed with agencies and institutions. Furthermore, landowners who wish to sell or rent their lands to investors visit the Agency and enrich the inventory.

PUBLIC LANDS

PRIVATE LANDS

ORGANIZED
INDUSTRIAL ZONES

Informing-Guiding Services at Investment Support Office



Balikesir Investment Support Office informs and guides investors in issues such as priorities, scope, eligibility conditions, application documents for fiscal and technical supports by public and private sector at local or central level.

Additionally investors are provided with information and guidance services they need before and during investment processes, as well as during operation phase.

Researches are conducted on prominent sectors in the province; data is gathered on topics which influence investment decisions such as raw materials, energy, logistics, and labor force; and put into the use of investors.

Various trainings are provided under supervision of qualified trainers in line with the needs of the enterprises operating in Balikesir.



Investments Followed Centrally

By following the bureaucratic processes centrally in the name of investors, permits and licenses for the investors are obtained as quickly as possible,



Farmer Register System

**Institution's
Opinions**

**Environmental
Impact
Assessment
(EIA)**

**Business
License**

**Construction
License**

Servitude

Relevant Institutions

Ministry of Food, Agriculture and Livestock



Telephone: (0312) 287 33 60
Web address: www.tarim.gov.tr

Balıkesir Governorship



Telephone: (0266) 245 13 01
Web address: www.balikesir.gov.tr

Balıkesir Directorate of Provincial Food
Agriculture and Livestock



Telephone: (0266) 246 26 70
Web address: balikesir.tarim.gov.tr

Balıkesir Metropolitan Municipality



Telephone: (0266) 239 15 10
Web address: www.balikesir.bel.tr

Balıkesir Chamber of Industry



Telephone: (0266) 281 11 80
Web address: www.bso.org.tr

Balıkesir Chamber of Commerce



Telephone: (0266) 244 68 68
Web address: www.bato.org.tr

Relevant Institutions

South Marmara Development Agency



Telephone: (0266) 246 10 00
Web address: www.gmka.gov.tr

Ministry of Science, Industry and Technology-Balıkesir Provincial Directorate



Telephone: (0266) 243 02 52
Web address: www.balikesir.sanayi.gov.tr

Balıkesir Provincial Directorate of Environmental Planning



Telephone: (0266) 224 47 15
Web address: www.csb.gov.tr

Agriculture and Rural Development Support Institution - Balıkesir Provincial Coordinator



Telephone: (0266) 245 58 61
Web address: balikesir.tkd.gov.tr

Ministry of Economy



Telephone: (0312) 204 75 00
Web address: www.ekonomi.gov.tr

Balıkesir University



Telephone: (0266) 612 14 00-08
Web address: www.balikesir.edu.tr

Relevant Institutions

Bandırma Onyedi Eylül University



Telephone: (0266) 717 01 17
Web address: www.bandirma.edu.tr

Bandırma Sheep Breeding Research Institute



Telephone: (0266) 738 00 80 - 81
Web address: www.arastirma.tarim.gov.t/koyunculuk

Edremit Olive Generating Station Directorate



Telephone: (0266) 373 13 71
Web address: www.tarim.gov.tr/BUGEM/edremitzeytin

UCTEA Chamber of Agriculture Engineers



Telephone: (0266) 249 60 10
Web address: www.zmo.org.tr

Chamber of Food Engineers



Telephone: (0312) 418 28 26
Web address: www.gidamo.org.tr

Turkish Veterinary Medical Association



Telephone: (0312) 435 54 15
Web address: www.tvhb.org.tr

